

~ Commercial Property for Lease ~

K-42 & West Business Park

2333 S. West St.

Building #100, Suite 104

Wichita, Kansas



features

- 1,875 sq. ft.
- Office/warehouse
- Rear delivery door 6'x7'
- 2 open office areas
- Building signage available
- \$8.75 Sq. Ft. NNN



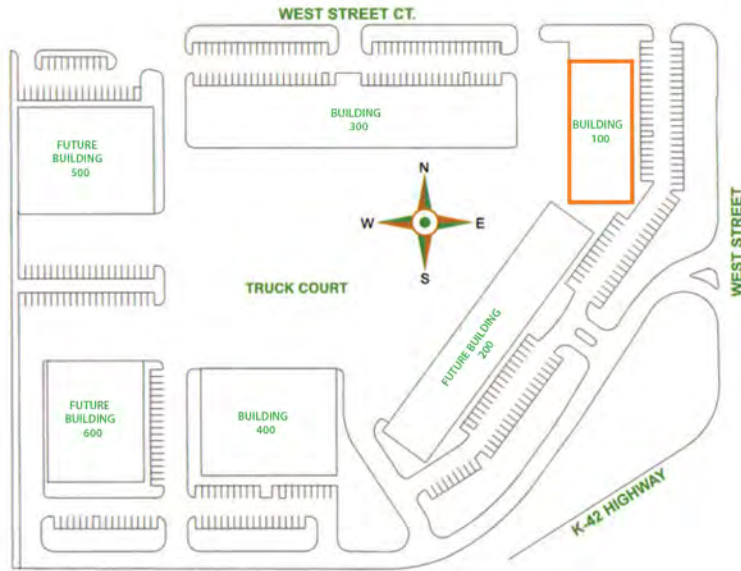
For information,
please contact Ross Way
(316) 681-1711
or visit www.amcwichita.com



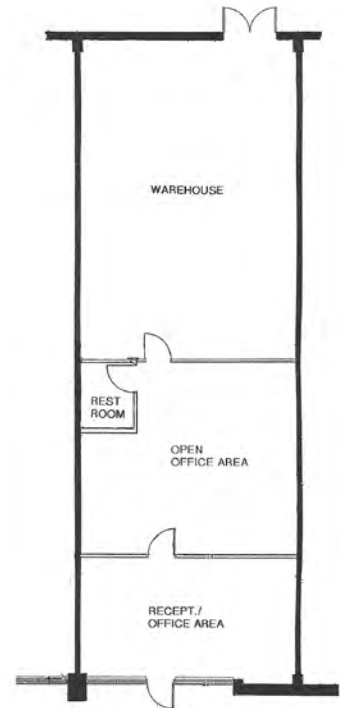
ANDERSON MANAGEMENT CO.

3450 N. Rock Road #201
Wichita, KS 67226
Phone: (316) 681-1711
Fax: (316) 681-3127
www.amcwichita.com

site plan



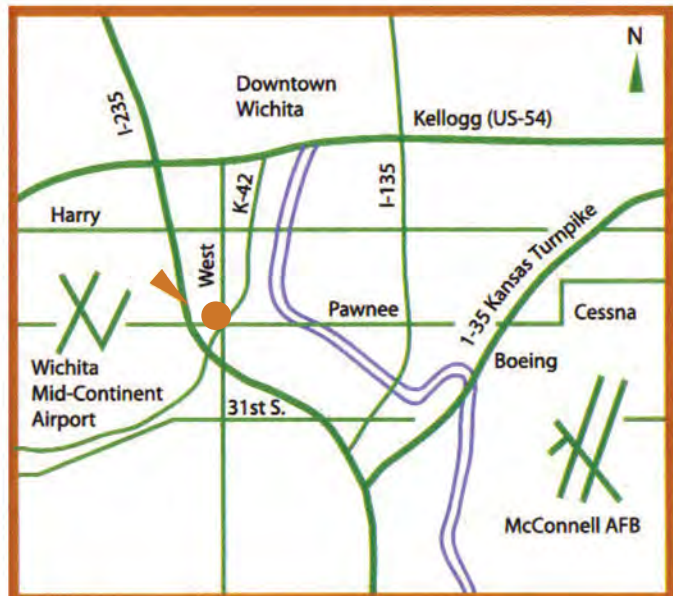
K-42 & West Business Park
Master Site Plan



Suite 104
Floor Plan

location

2333 S. West St.
Building 100, Suite #104
Wichita, Kansas 67213



contact

Ross Way
ross@amcwichita.com
(316) 681-1711
or visit www.amcwichita.com