

~ Commercial Property for Lease ~

K-42 & West Business Park

2333 S. West St.

Building #100, Suite 107

Wichita, Kansas



features

- 2,250 sq. ft.
- Office/warehouse
- 10' x 10' o/h door
- Recept. Area
- 1 office
- 4' x 10' sign can
- \$2,500 per month (includes CAM)



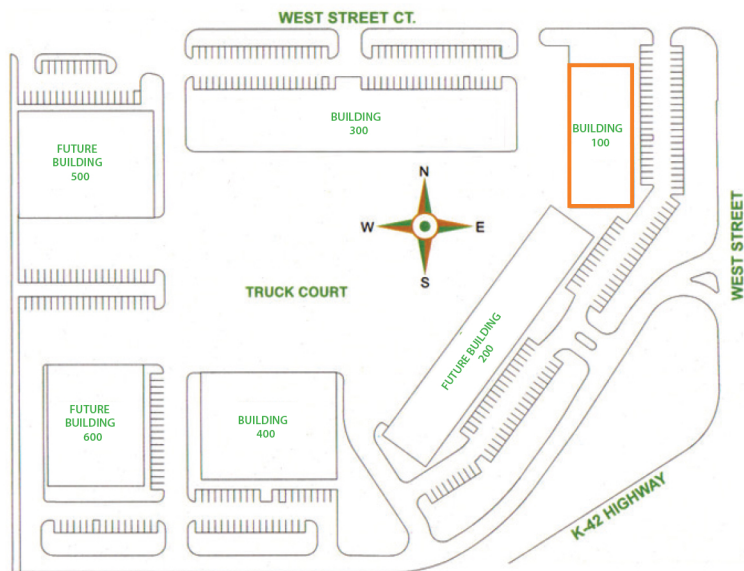
For information,
please contact Ross Way
(316) 681-1711
or visit www.amcwichita.com



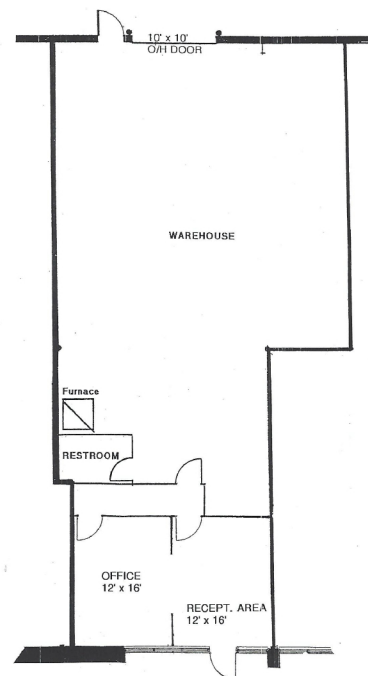
ANDERSON MANAGEMENT CO.

3450 N. Rock Road #201
Wichita, KS 67226
Phone: (316) 681-1711
Fax: (316) 681-3127
www.amcwichita.com

site plan



K-42 & West Business Park
Master Site Plan



Suite 107
Floor Plan

location

2333 S. West St.
Suite #107
Wichita, Kansas 67213

contact

Ross Way
ross@amcwichita.com
(316) 681-1711
or visit www.amcwichita.com

