

~ Commercial Property for Lease ~

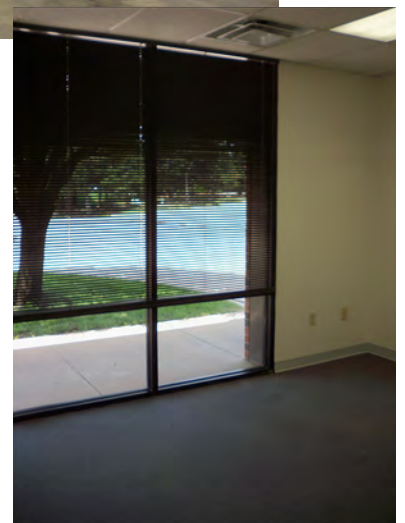
## Northrock Business Park

3450 N. Rock Road  
Building #500, Suite 509  
Wichita, Kansas



### features

- 1,550 sq. ft.
- Reception Area
- 1 Office
- Warehouse (air conditioned)
- 10' x 10' O/H Door
- \$1,650 per month



For information,  
please contact Ross Way  
**(316) 681-1711**  
or visit [www.amcwichita.com](http://www.amcwichita.com)



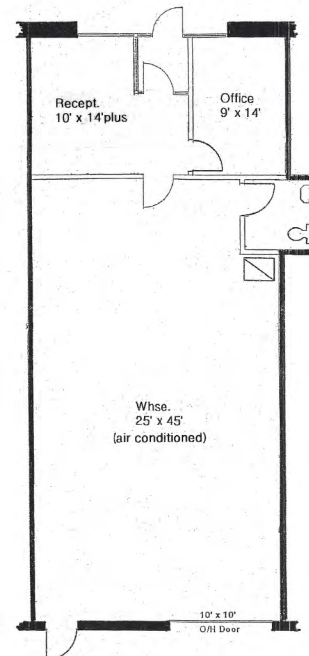
# ANDERSON MANAGEMENT CO.

3450 N. Rock Road #201  
Wichita, KS 67226  
Phone: (316) 681-1711  
Fax: (316) 681-3127  
www.amcwichita.com

## site plan



Northrock Business Park  
Master Site Plan



Suite 509  
Floor Plan

## location

Northrock Business Park  
3450 N. Rock Road  
Building #500, Suite 509  
Wichita, Kansas 67226



## contact

Ross Way  
ross@amcwichita.com  
(316) 681-1711  
or visit www.amcwichita.com