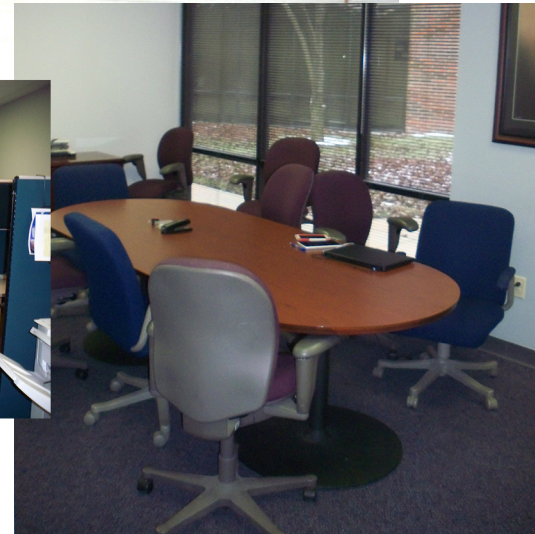


~ Commercial Property for Lease ~

Northrock Business Park

3450 N. Rock Road
Building #700, Suite 701
Wichita, Kansas



features

- 4,020 sq. ft.
- Office/Showroom/Whse.
- Air conditioned warehouse
- Conf. Room
- 3 offices
- Cubicle areas
- Showroom
- \$4,690 per month

For information,
please contact Ross Way
(316) 681-1711
or visit www.amcwichita.com



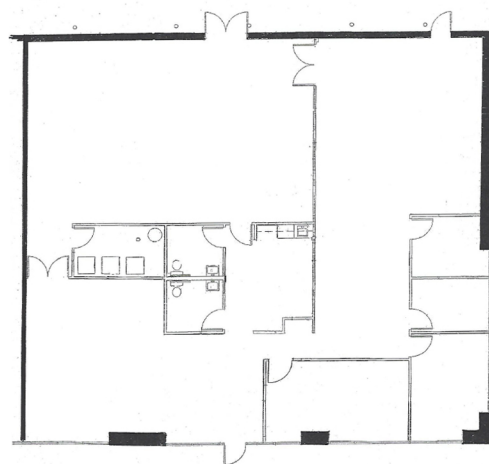
ANDERSON MANAGEMENT CO.

3450 N. Rock Road #201
Wichita, KS 67226
Phone: (316) 681-1711
Fax: (316) 681-3127
www.amcwichita.com

site plan



Northrock Business Park
Master Site Plan



Suite 701
Floor Plan

location

Northrock Business Park
3450 N. Rock Road
Building #700, Suite 701
Wichita, Kansas 67226



contact

Ross Way
ross@amcwichita.com
(316) 681-1711
or visit www.amcwichita.com