

~ Commercial Property for Lease ~

Northrock Business Park

8201 E. 34th St. N.

Building #1300, Suite 1305

Wichita, Kansas



features

- 3,000 sq. ft.
- Recpt. area
- Offices (finish-to-suit)
- Cubicle area
- Break Room
- Optional o/h door
- \$3,250 per month

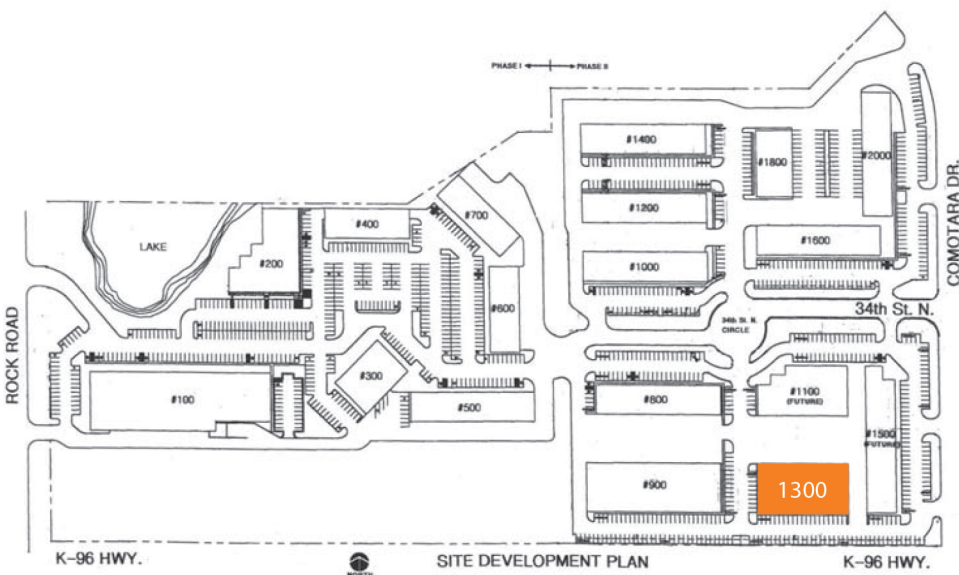
For information,
please contact Ross Way
(316) 681-1711
or visit www.amcwichita.com



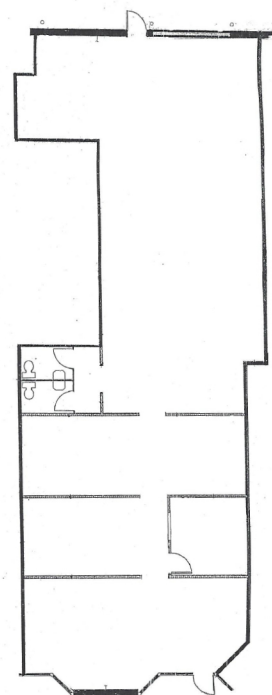
ANDERSON MANAGEMENT CO.

3450 N. Rock Road #201
Wichita, KS 67226
Phone: (316) 681-1711
Fax: (316) 681-3127
www.amcwichita.com

site plan



Northrock Business Park
Master Site Plan



Suite 1305
Floor Plan

location

Northrock Business Park
8201 E. 34th St. N.
Building #1300, Suite 1305
Wichita, Kansas 67226



contact

Ross Way
ross@amcwichita.com
(316) 681-1711
or visit www.amcwichita.com