

~ Commercial Property for Lease ~

Northrock Business Park

8201 E. 34th St. N.

Building #800, Suite 801

Wichita, Kansas



features

- 4,000 sq. ft.
- Private offices
- Conf. room
- Cubicle area
- Tech area
- Storage with O/H door
- Bldg. end cap with a lot of windows
- \$4,600 per month

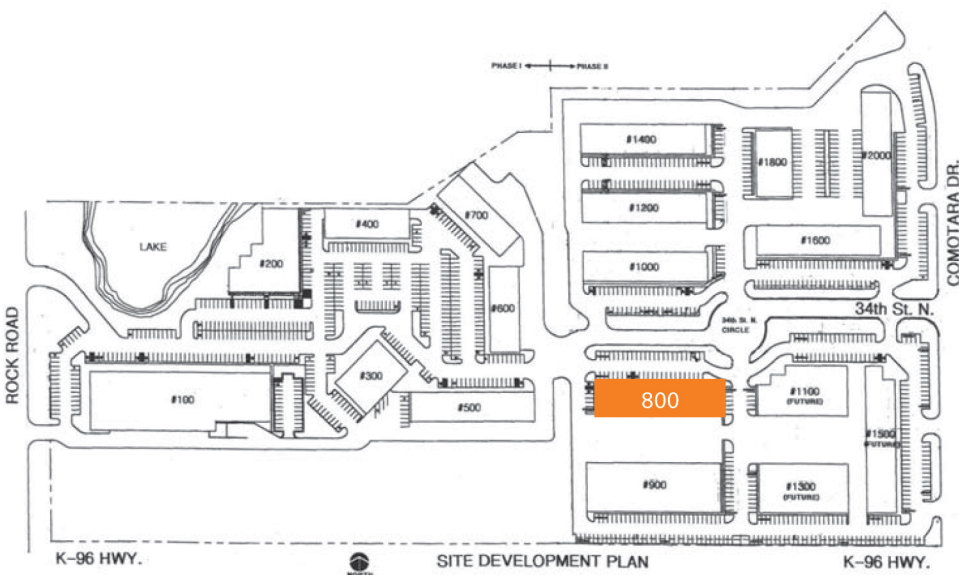
For information,
please contact Ross Way
(316) 681-1711
or visit www.amcwichita.com



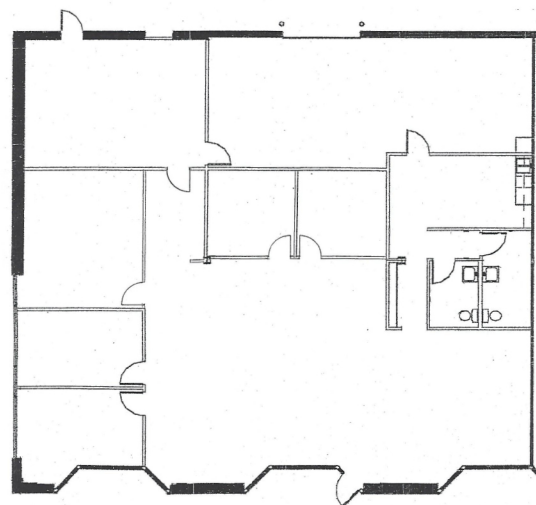
ANDERSON MANAGEMENT CO.

3450 N. Rock Road #201
Wichita, KS 67226
Phone: (316) 681-1711
Fax: (316) 681-3127
www.amcwichita.com

site plan



Northrock Business Park
Master Site Plan



Suite 801
Floor Plan

location

Northrock Business Park
8201 E. 34th St. N.
Building #800, Suite 801
Wichita, Kansas 67226



contact

Ross Way
ross@amcwichita.com
(316) 681-1711
or visit www.amcwichita.com