

**NORTHROCK BUSINESS PARK**  
**8200 E 34th St N, Bldg 1000, Suite #1001 Wichita, Kansas**  
Office For Lease



### PROPERTY FEATURES

- 18 buildings - 300,000 SF
- Lush landscaping
- Adjacent to K-96 Hwy.
- Door-side parking
- On-site property management
- On-site US Mail & UPS drop boxes
- Walking path
- 2 gazebos
- Individual tenant signage
- Landscaped lake area
- Extra storage space ([U-Stor Northrock](#))
- Security patrols at night
- Fiber optics
- More details at [northrockbp.com](http://northrockbp.com)

### SUITE #1001

- 1,300 SF
- Reception area
- 2 private offices
- Cubicle area
- Rear delivery door
- Private restrooms
- Building end suite - lots of windows
- Building signage available
- **\$1,600 / month**



3450 N. Rock Road #201  
Wichita, KS 67226  
[amcwichita.com](http://amcwichita.com)

FOR INFORMATION  
**Contact Ross Way**  
**(316) 681-1711**  
[ross@amcwichita.com](mailto:ross@amcwichita.com)

**NORTHROCK BUSINESS PARK**  
8200 E 34th St N, Bldg 1000, Suite #1001 Wichita, Kansas  
Office For Lease

**INTERIOR PHOTOS**



3450 N. Rock Road #201  
Wichita, KS 67226  
amcwichita.com

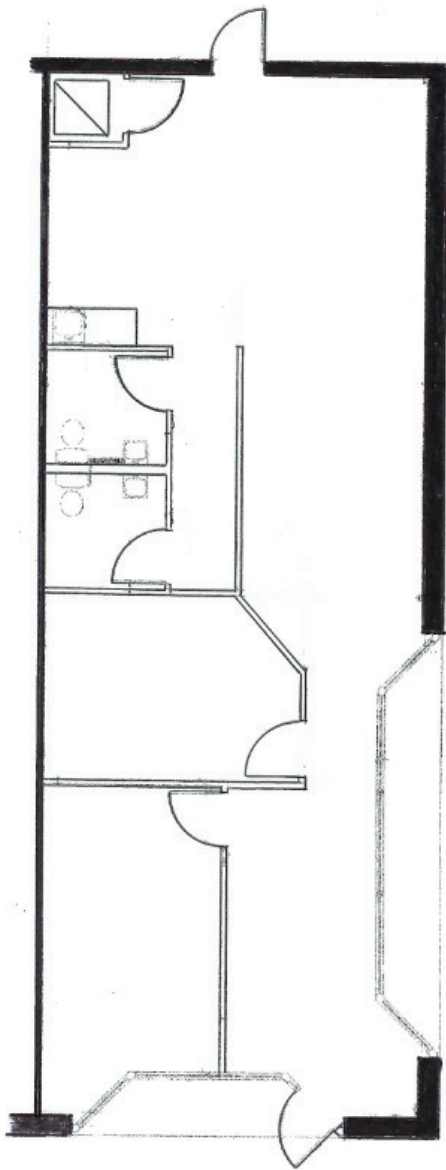
FOR INFORMATION  
**Contact Ross Way**  
**(316) 681-1711**  
ross@amcwichita.com

# NORTHROCK BUSINESS PARK

8200 E 34th St N, Bldg 1000, Suite #1001 Wichita, Kansas

Office For Lease

## FLOOR PLAN



3450 N. Rock Road #201  
Wichita, KS 67226  
[amcwichita.com](http://amcwichita.com)

FOR INFORMATION

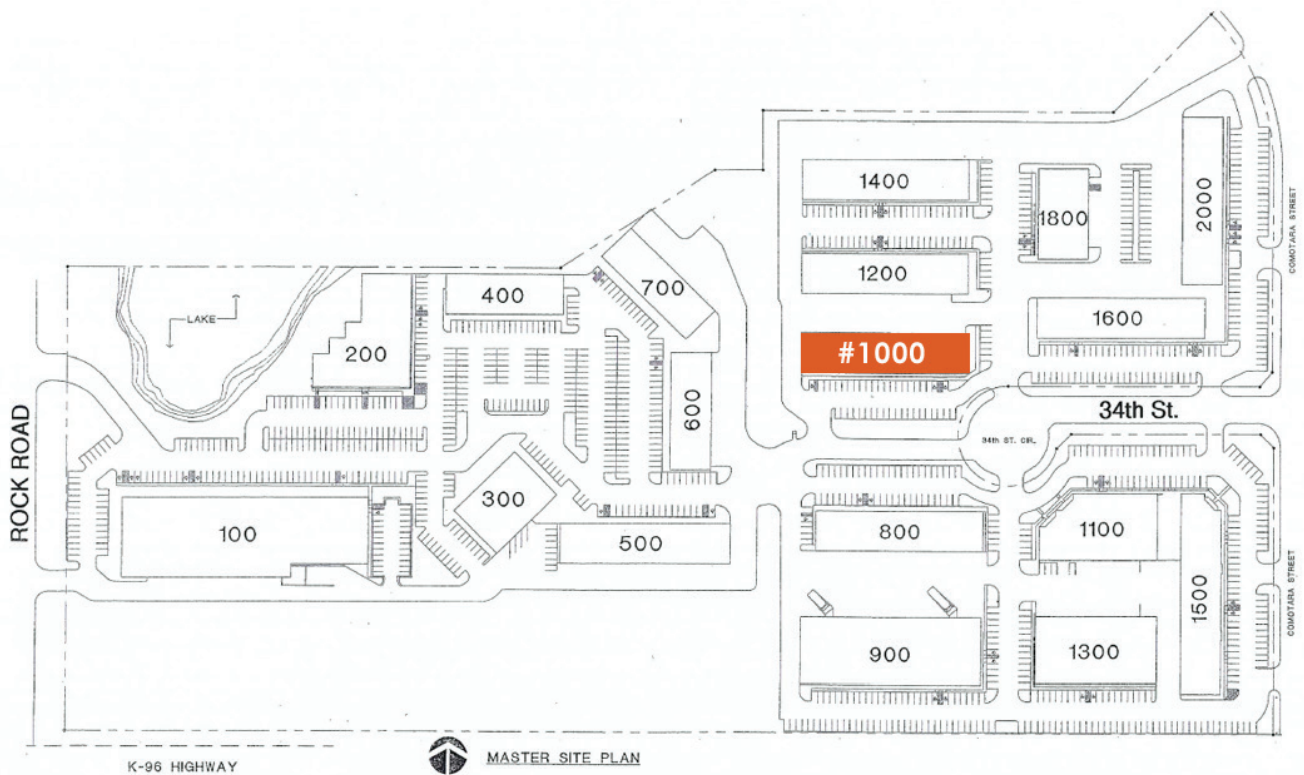
Contact Ross Way

**(316) 681-1711**

[ross@amcwichita.com](mailto:ross@amcwichita.com)

**NORTHROCK BUSINESS PARK**  
8200 E 34th St N, Bldg 1000, Suite #1001 Wichita, Kansas  
Office For Lease

**NORTHROCK BUSINESS PARK SITE PLAN**



3450 N. Rock Road #201  
Wichita, KS 67226  
amcwichita.com

FOR INFORMATION  
**Contact Ross Way**  
**(316) 681-1711**  
ross@amcwichita.com

# NORTHROCK BUSINESS PARK

8200 E 34th St N, Bldg 1000, Suite #1001 Wichita, Kansas  
Office For Lease

## LOCATION/AERIAL



3450 N. Rock Road #201  
Wichita, KS 67226  
amcwichita.com

FOR INFORMATION  
Contact Ross Way  
**(316) 681-1711**  
ross@amcwichita.com