

# NORTHROCK BUSINESS PARK

3450 N Rock Road, Bldg 300, Suite #301-A, Wichita, Kansas

Office For Lease



## PROPERTY FEATURES

- 18 buildings - 300,000 SF
- Lush landscaping
- Adjacent to K-96 Hwy.
- Door-side parking
- On-site property management
- On-site US Mail & UPS drop boxes
- Walking path
- 2 gazebos
- Individual tenant signage
- Landscaped lake area
- Extra storage space ([U-Stor Northrock](#))
- Security patrols at night
- Fiber optics
- More details at [northrockbp.com](http://northrockbp.com)

## SUITE #301-A

- 1,800 SF available
- Reception area
- Cubicle area (existing cubicles)
- 3 offices
- Conference room
- Storage room
- **\$2,600 / month** (full-service)



3450 N. Rock Road #201  
Wichita, KS 67226  
[amcwichita.com](http://amcwichita.com)

FOR INFORMATION  
**Contact Ross Way**  
**(316) 681-1711**  
[ross@amcwichita.com](mailto:ross@amcwichita.com)

# NORTHROCK BUSINESS PARK

3450 N Rock Road, Bldg 300, Suite #301-A, Wichita, Kansas

Office For Lease

## INTERIOR PHOTOS



3450 N. Rock Road #201  
Wichita, KS 67226  
amcwichita.com

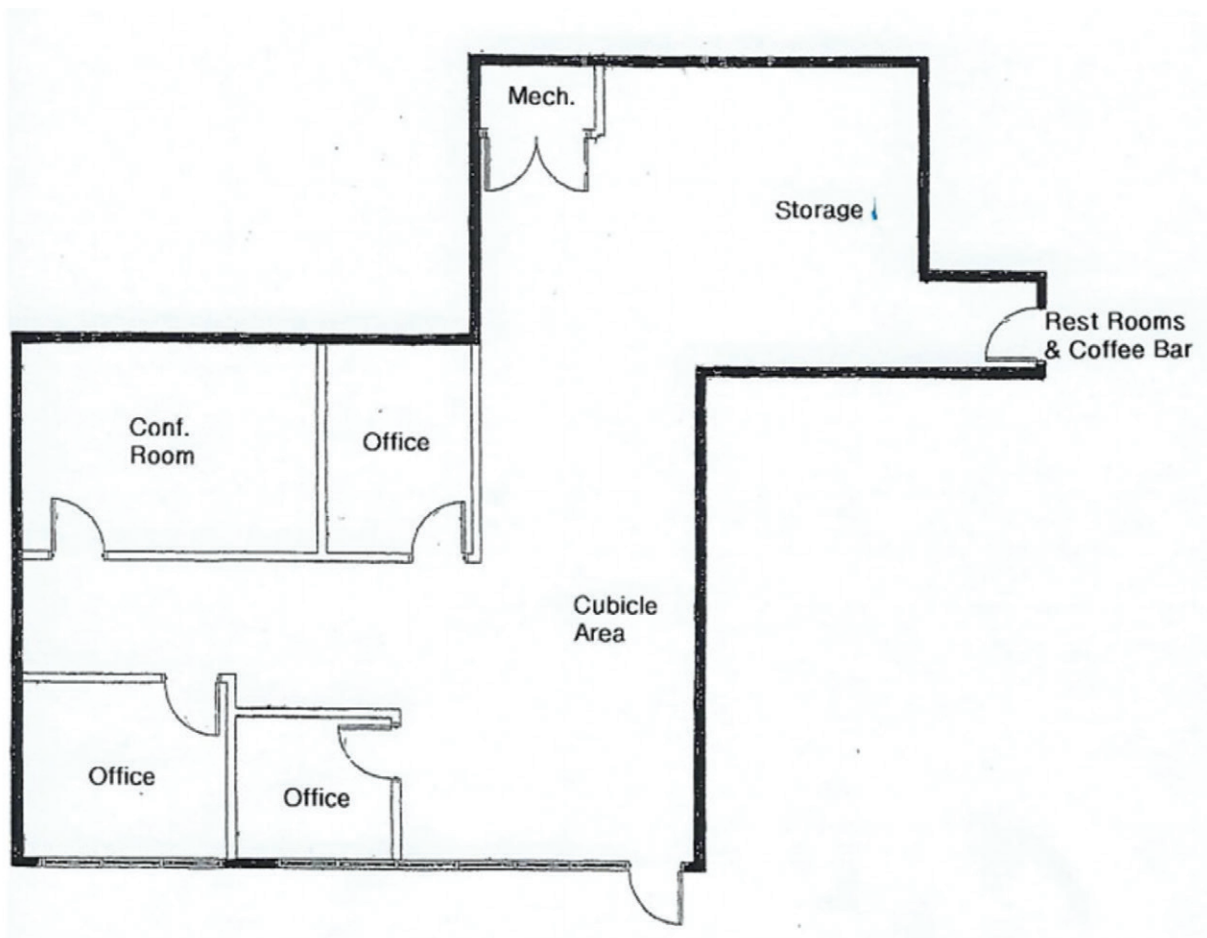
FOR INFORMATION  
Contact Ross Way  
**(316) 681-1711**  
ross@amcwichita.com

# NORTHROCK BUSINESS PARK

3450 N Rock Road, Bldg 300, Suite #301-A, Wichita, Kansas

Office For Lease

## FLOOR PLAN



3450 N. Rock Road #201  
Wichita, KS 67226  
amcwichita.com

FOR INFORMATION

Contact Ross Way

**(316) 681-1711**

ross@amcwichita.com

**NORTHROCK BUSINESS PARK**  
3450 N Rock Road, Bldg 300, Suite #301-A, Wichita, Kansas  
Office For Lease

**NORTHROCK BUSINESS PARK SITE PLAN**



3450 N. Rock Road #201  
Wichita, KS 67226  
amcwichita.com

FOR INFORMATION  
**Contact Ross Way**  
**(316) 681-1711**  
ross@amcwichita.com

# NORTHROCK BUSINESS PARK

3450 N Rock Road, Bldg 300, Suite #301-A, Wichita, Kansas

Office For Lease

## LOCATION/AERIAL



3450 N. Rock Road #201  
Wichita, KS 67226  
amcwichita.com

FOR INFORMATION  
Contact Ross Way  
**(316) 681-1711**  
ross@amcwichita.com