

# **NORTHROCK BUSINESS PARK**

**8201 E 34th St N, Bldg 900, Suite #905, Wichita, Kansas**  
**Office/Warehouse For Lease**



## **PROPERTY FEATURES**

- 18 buildings - 300,000 SF
- Lush landscaping
- Adjacent to K-96 Hwy.
- Door-side parking
- On-site property management
- On-site US Mail & UPS drop boxes
- Walking path
- 2 gazebos
- Individual tenant signage
- Landscaped lake area
- Extra storage space (U-Stor Northrock)
- Security patrols at night
- Fiber optics
- More details at [northrockbp.com](http://northrockbp.com)

## **SUITE #905**

- 4,800 SF available
- Office/warehouse/service
- Reception area
- 4 offices
- Conference room
- Break room
- Cubicle area
- Walk-in cooler
- Clean room
- IT room
- Climate controlled warehouse
- Ground level and dockwell o/h door
- K-96 Hwy. visibility (signage)
- **\$5,400 / month**

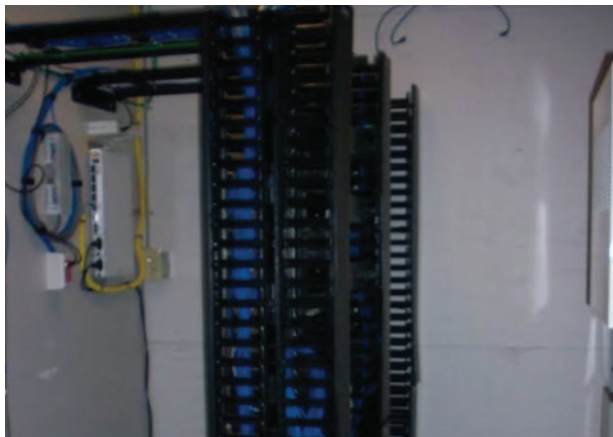
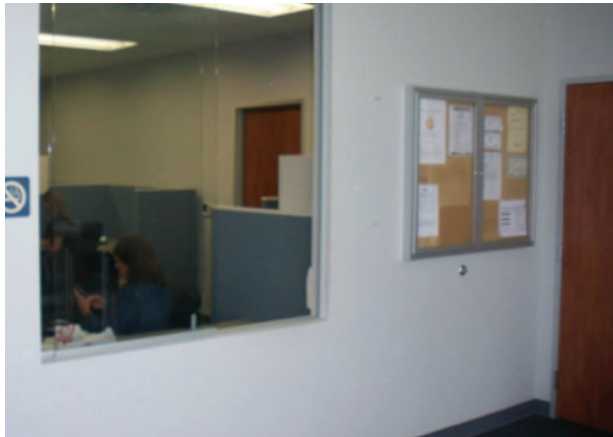


3450 N. Rock Road #201  
Wichita, KS 67226  
[amcwichita.com](http://amcwichita.com)

FOR INFORMATION  
**Contact Ross Way**  
**(316) 681-1711**  
[ross@amcwichita.com](mailto:ross@amcwichita.com)

**NORTHROCK BUSINESS PARK**  
**8201 E 34th St N, Bldg 900, Suite #905, Wichita, Kansas**  
**Office/Warehouse For Lease**

**INTERIOR PHOTOS**

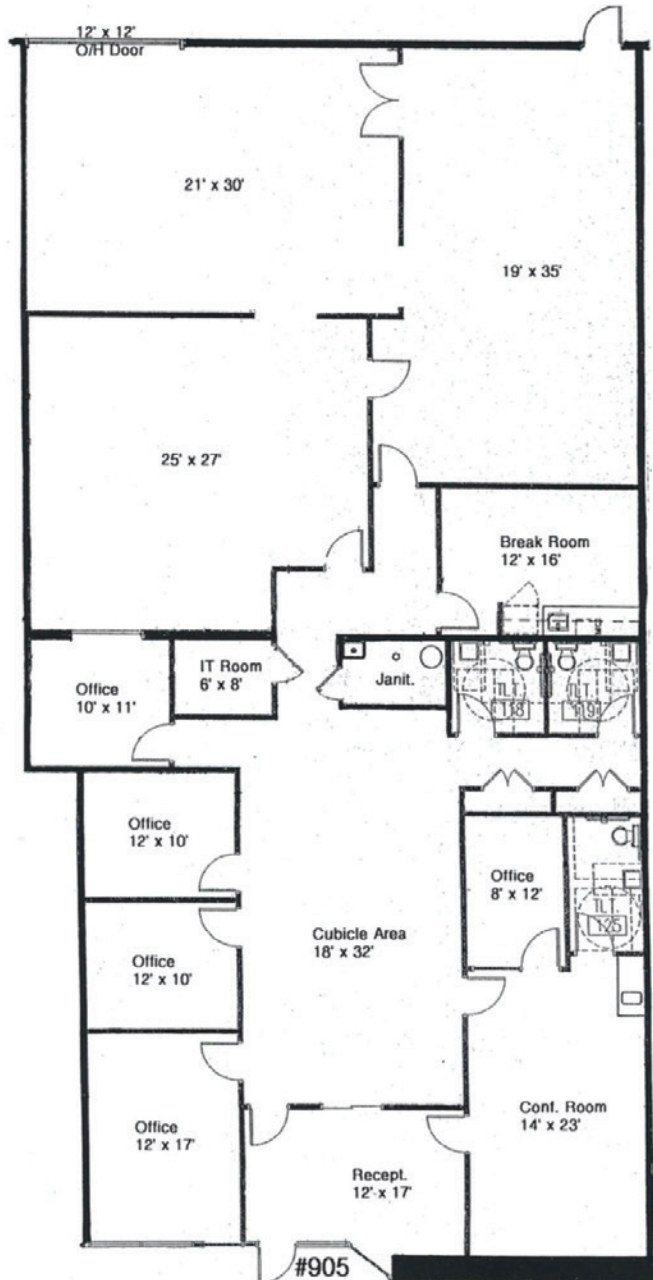


3450 N. Rock Road #201  
Wichita, KS 67226  
[amcwichita.com](http://amcwichita.com)

FOR INFORMATION  
**Contact Ross Way**  
**(316) 681-1711**  
[ross@amcwichita.com](mailto:ross@amcwichita.com)

**NORTHROCK BUSINESS PARK**  
**8201 E 34th St N, Bldg 900, Suite #905, Wichita, Kansas**  
**Office/Warehouse For Lease**

## FLOOR PLAN



3450 N. Rock Road #201  
Wichita, KS 67226  
amcwichita.com

FOR INFORMATION  
**Contact Ross Way**  
**(316) 681-1711**  
ross@amcwichita.com



**NORTHROCK BUSINESS PARK**  
8201 E 34th St N, Bldg 900, Suite #905, Wichita, Kansas  
Office/Warehouse For Lease

**NORTHROCK BUSINESS PARK SITE PLAN**



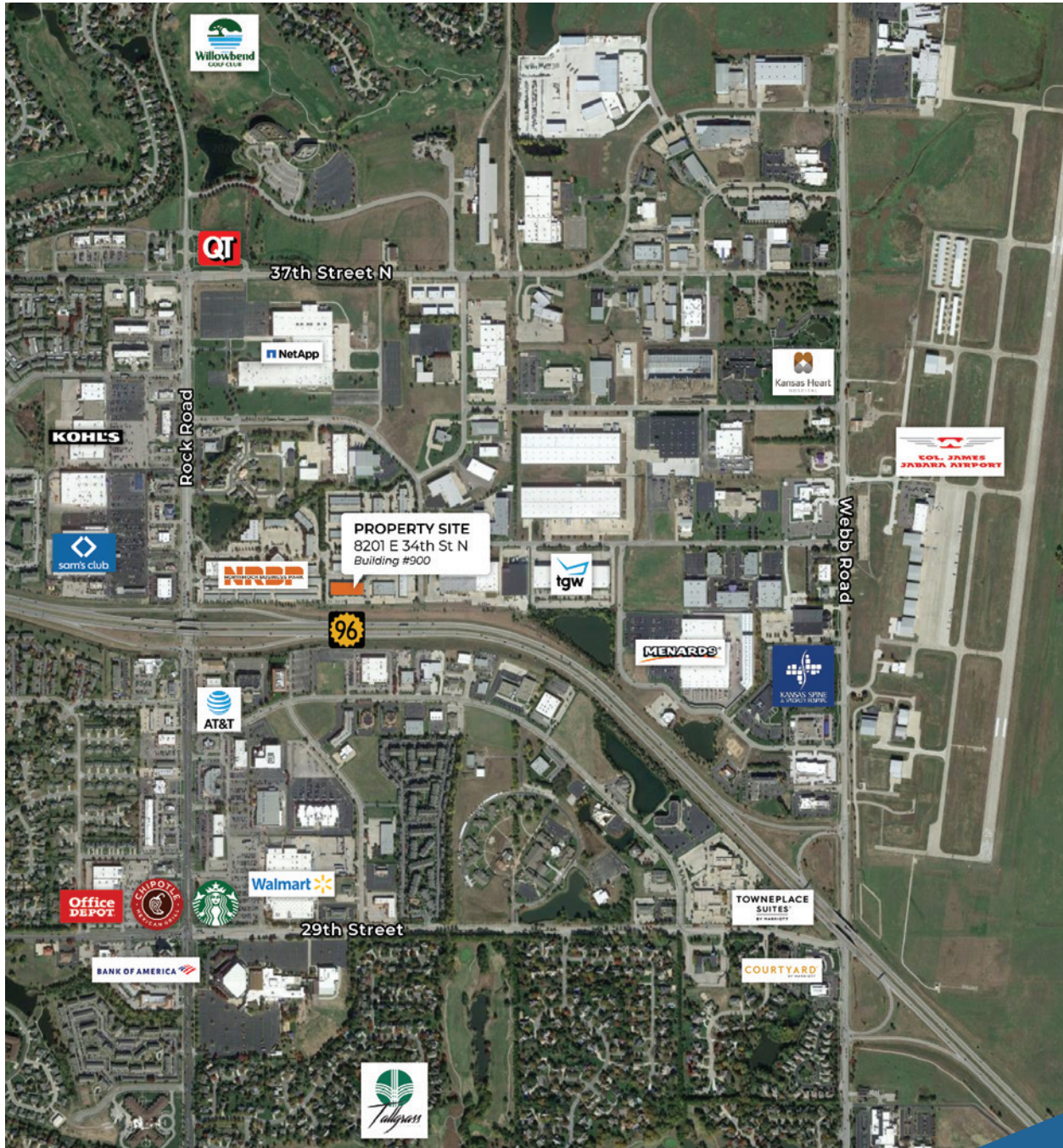
3450 N. Rock Road #201  
Wichita, KS 67226  
amcwichita.com

FOR INFORMATION  
**Contact Ross Way**  
**(316) 681-1711**  
ross@amcwichita.com

# NORTHROCK BUSINESS PARK

8201 E 34th St N, Bldg 900, Suite #905, Wichita, Kansas  
Office/Warehouse For Lease

## LOCATION/AERIAL



3450 N. Rock Road #201  
Wichita, KS 67226  
amcwichita.com

FOR INFORMATION  
**Contact Ross Way**  
**(316) 681-1711**  
ross@amcwichita.com