

# **NORTHROCK BUSINESS PARK**

**8200 E 34th St N, Bldg 1800, Suite #1803, Wichita, Kansas**

## **Office/Warehouse For Lease**



### **PROPERTY FEATURES**

- 18 buildings - 300,000 SF
- Lush landscaping
- Adjacent to K-96 Hwy.
- Door-side parking
- On-site property management
- On-site US Mail & UPS drop boxes
- Walking path
- 2 gazebos
- Individual tenant signage
- Landscaped lake area
- Extra storage space (U-Stor Northrock)
- Security patrols at night
- Fiber optics
- More details at [northrockbp.com](http://northrockbp.com)

### **SUITE #1803**

- 2,025 SF available
- Office/warehouse
- Large reception/cubicle area
- 2 private offices
- Private restroom
- Copier/fax/storage closet
- Air conditioned warehouse
- 10' x 10' o/h door
- **\$2,280 / month** (modified gross)



3450 N. Rock Road #201  
Wichita, KS 67226  
[amcwichita.com](http://amcwichita.com)

FOR INFORMATION  
**Contact Ross Way**  
**(316) 681-1711**  
[ross@amcwichita.com](mailto:ross@amcwichita.com)

**NORTHROCK BUSINESS PARK**  
**8200 E 34th St N, Bldg 1800, Suite #1803, Wichita, Kansas**  
**Office/Warehouse For Lease**

**INTERIOR PHOTOS**



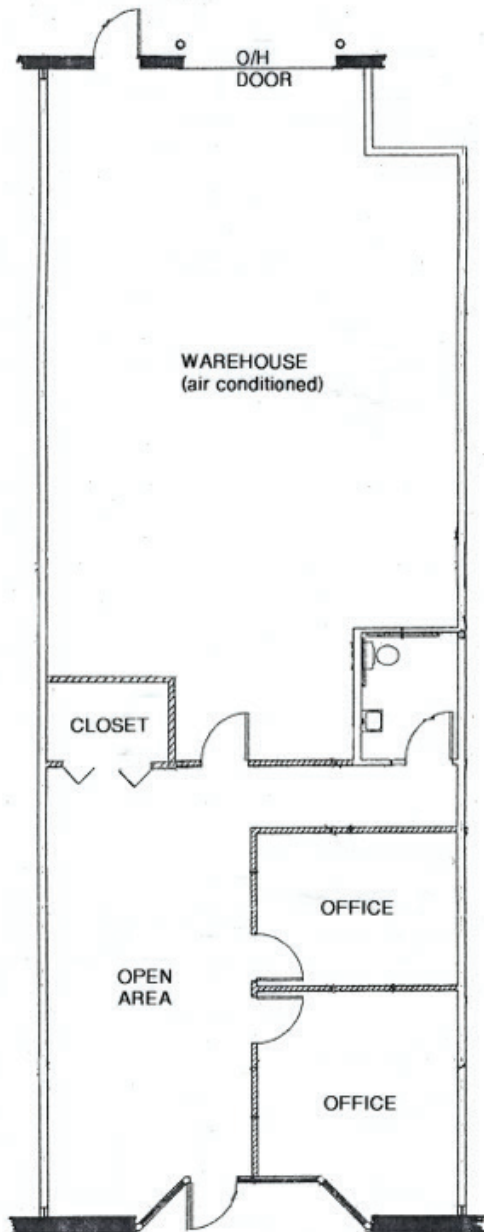
3450 N. Rock Road #201  
Wichita, KS 67226  
amcwichita.com

FOR INFORMATION  
**Contact Ross Way**  
**(316) 681-1711**  
ross@amcwichita.com



**NORTHROCK BUSINESS PARK**  
**8200 E 34th St N, Bldg 1800, Suite #1803, Wichita, Kansas**  
**Office/Warehouse For Lease**

**FLOOR PLAN**

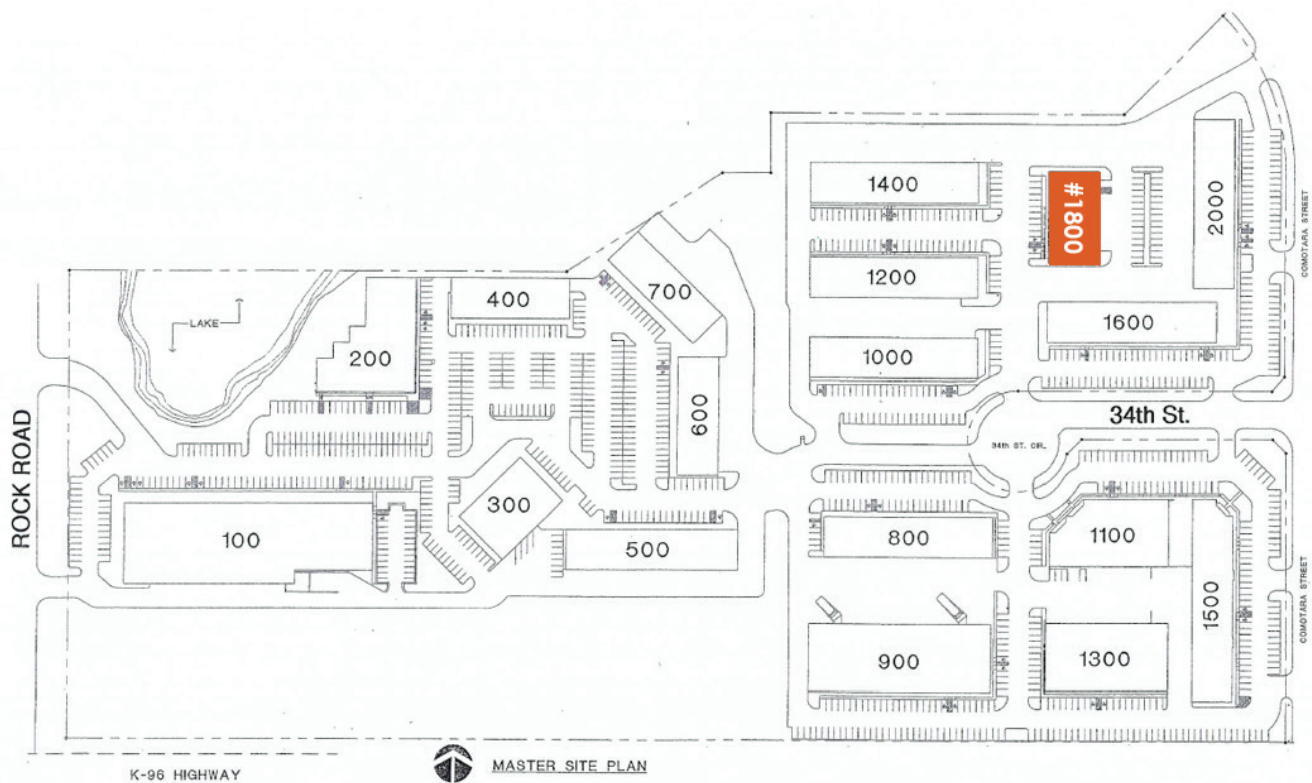


3450 N. Rock Road #201  
Wichita, KS 67226  
[amcwichita.com](http://amcwichita.com)

FOR INFORMATION  
**Contact Ross Way**  
**(316) 681-1711**  
[ross@amcwichita.com](mailto:ross@amcwichita.com)

**NORTHROCK BUSINESS PARK**  
8200 E 34th St N, Bldg 1800, Suite #1803, Wichita, Kansas  
Office/Warehouse For Lease

**NORTHROCK BUSINESS PARK SITE PLAN**



3450 N. Rock Road #201  
Wichita, KS 67226  
amcwichita.com

FOR INFORMATION  
**Contact Ross Way**  
**(316) 681-1711**  
ross@amcwichita.com



# NORTHROCK BUSINESS PARK

8200 E 34th St N, Bldg 1800, Suite #1803, Wichita, Kansas  
Office/Warehouse For Lease

## LOCATION/AERIAL



3450 N. Rock Road #201  
Wichita, KS 67226  
amcwichita.com

FOR INFORMATION  
**Contact Ross Way**  
**(316) 681-1711**  
ross@amcwichita.com