

NORTHROCK BUSINESS PARK
8200 E 34th St N, Bldg 1200, Suite #1207 Wichita, Kansas
Office For Lease



PROPERTY FEATURES

- 18 buildings - 300,000 SF
- Lush landscaping
- Adjacent to K-96 Hwy.
- Door-side parking
- On-site property management
- On-site US Mail & UPS drop boxes
- Walking path
- 2 gazebos
- Individual tenant signage
- Landscaped lake area
- Extra storage space (U-Stor Northrock)
- Security patrols at night
- Fiber optics
- More details at northrockbp.com

SUITE #1207

- 1,200 SF available
- Open Area with Coffee Bar
- 4 Offices
- Private Restroom
- **\$1,675** / month (full service)



3450 N. Rock Road #201
Wichita, KS 67226
amcwichita.com

FOR INFORMATION
Contact Ross Way
(316) 681-1711
ross@amcwichita.com

NORTHROCK BUSINESS PARK
8200 E 34th St N, Bldg 1200, Suite #1207 Wichita, Kansas
Office For Lease

INTERIOR PHOTOS



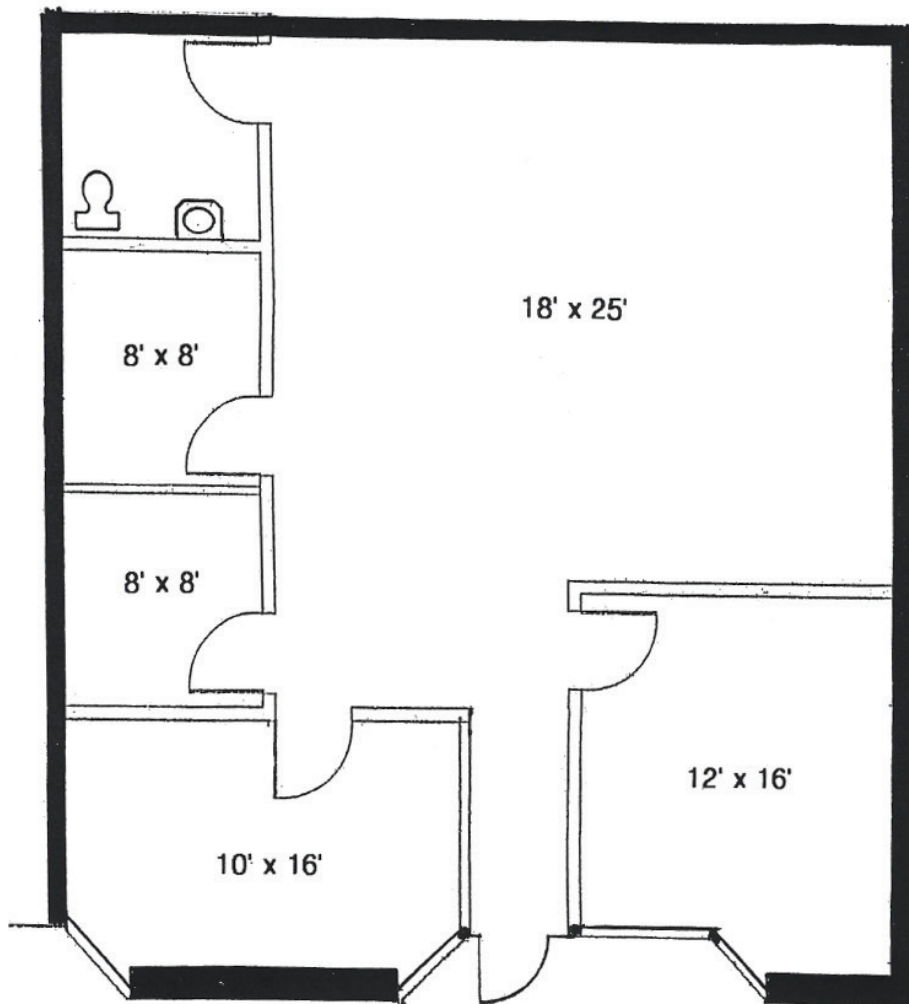
3450 N. Rock Road #201
Wichita, KS 67226
amcwichita.com

FOR INFORMATION
Contact Ross Way
(316) 681-1711
ross@amcwichita.com

NORTHROCK BUSINESS PARK
8200 E 34th St N, Bldg 1200, Suite #1207 Wichita, Kansas
Office For Lease

FLOOR PLAN

1,200 sq. ft.
\$1,675 per month (includes utilities)



*ALL SIZES APPROX.

#1207



3450 N. Rock Road #201
Wichita, KS 67226
amcwichita.com

FOR INFORMATION
Contact Ross Way
(316) 681-1711
ross@amcwichita.com

NORTHROCK BUSINESS PARK

8200 E 34th St N, Bldg 1200, Suite #1207 Wichita, Kansas
Office For Lease

LOCATION/AERIAL

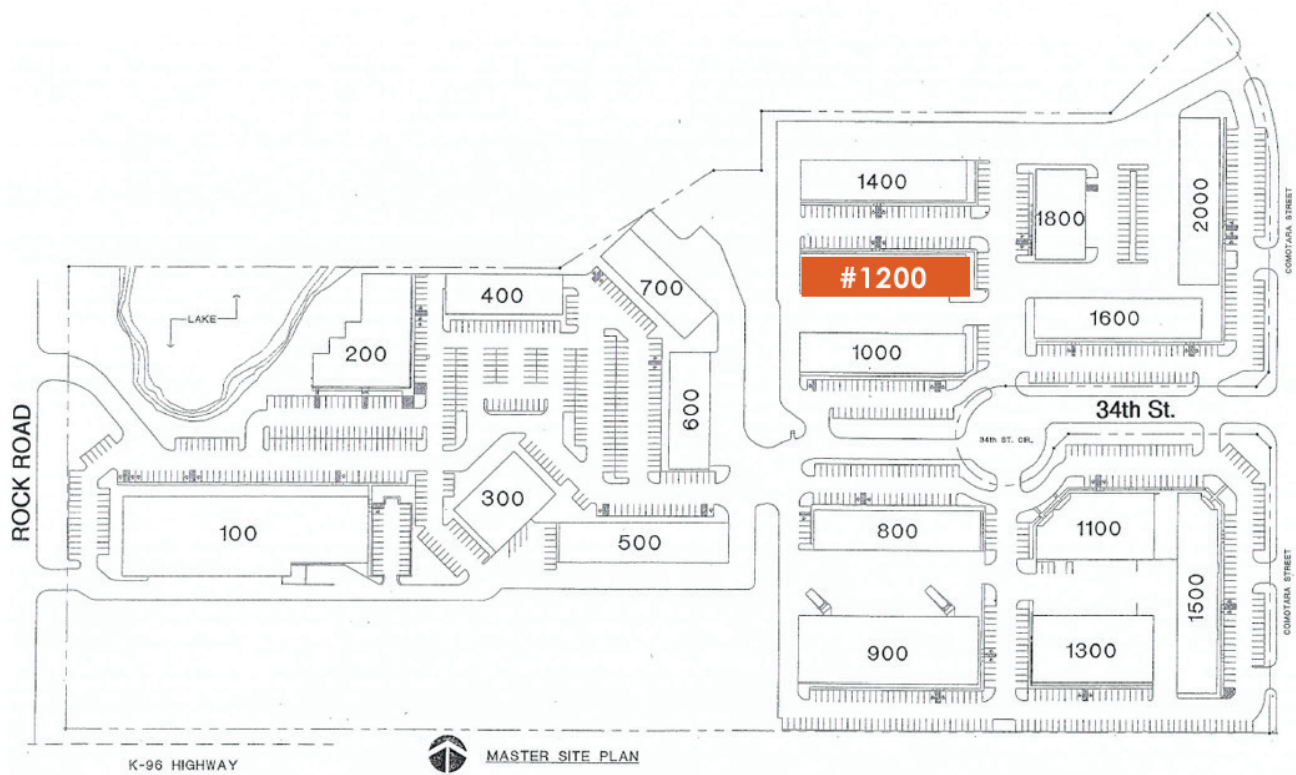


3450 N. Rock Road #201
Wichita, KS 67226
amcwichita.com

FOR INFORMATION
Contact Ross Way
(316) 681-1711
ross@amcwichita.com

NORTHROCK BUSINESS PARK
8200 E 34th St N, Bldg 1200, Suite #1207 Wichita, Kansas
Office For Lease

NORTHROCK BUSINESS PARK SITE PLAN



3450 N. Rock Road #201
Wichita, KS 67226
amcwichita.com

FOR INFORMATION
Contact Ross Way
(316) 681-1711
ross@amcwichita.com