

**NORTHROCK BUSINESS PARK**  
8200 E 34th St N, Bldg 1200, Suite #1208 Wichita, Kansas  
Office For Lease



**PROPERTY FEATURES**

- 18 buildings - 300,000 SF
- Lush landscaping
- Adjacent to K-96 Hwy.
- Door-side parking
- On-site property management
- On-site US Mail & UPS drop boxes
- Walking path
- 2 gazebos
- Individual tenant signage
- Landscaped lake area
- Extra storage space (U-Stor Northrock)
- Security patrols at night
- Fiber optics
- More details at [northrockbp.com](http://northrockbp.com)

**SUITE #1208**

- 1,500 SF available
- Reception Area
- 2 Offices
- IT Room
- Private Restrooms
- Open Area
- Front & Rear Doors
- **\$1,750** / month (modified gross)



3450 N. Rock Road #201  
Wichita, KS 67226  
[amcwichita.com](http://amcwichita.com)

FOR INFORMATION  
**Contact Ross Way**  
**(316) 681-1711**  
[ross@amcwichita.com](mailto:ross@amcwichita.com)

**NORTHROCK BUSINESS PARK**  
8200 E 34th St N, Bldg 1200, Suite #1208 Wichita, Kansas  
Office For Lease

**INTERIOR PHOTOS**



3450 N. Rock Road #201  
Wichita, KS 67226  
amcwichita.com

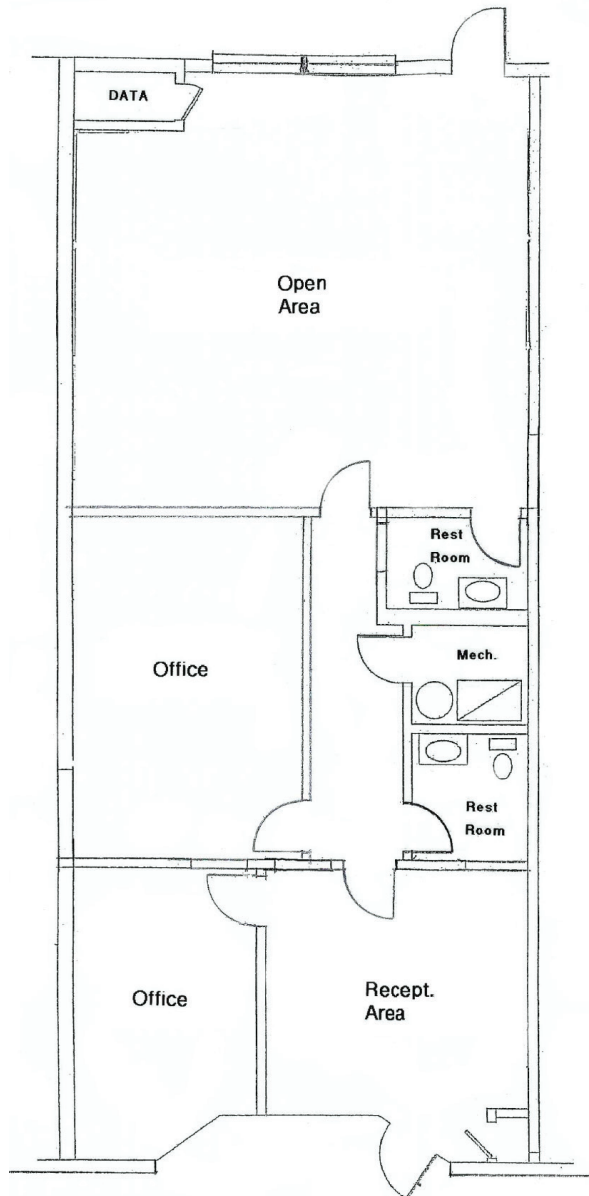
FOR INFORMATION  
**Contact Ross Way**  
**(316) 681-1711**  
ross@amcwichita.com

# NORTHROCK BUSINESS PARK

8200 E 34th St N, Bldg 1200, Suite #1208 Wichita, Kansas

Office For Lease

## FLOOR PLAN



FOR INFORMATION

Contact Ross Way

**(316) 681-1711**

ross@amcwichita.com



3450 N. Rock Road #201

Wichita, KS 67226

amcwichita.com



# NORTHROCK BUSINESS PARK

8200 E 34th St N, Bldg 1200, Suite #1208 Wichita, Kansas  
Office For Lease

## LOCATION/AERIAL

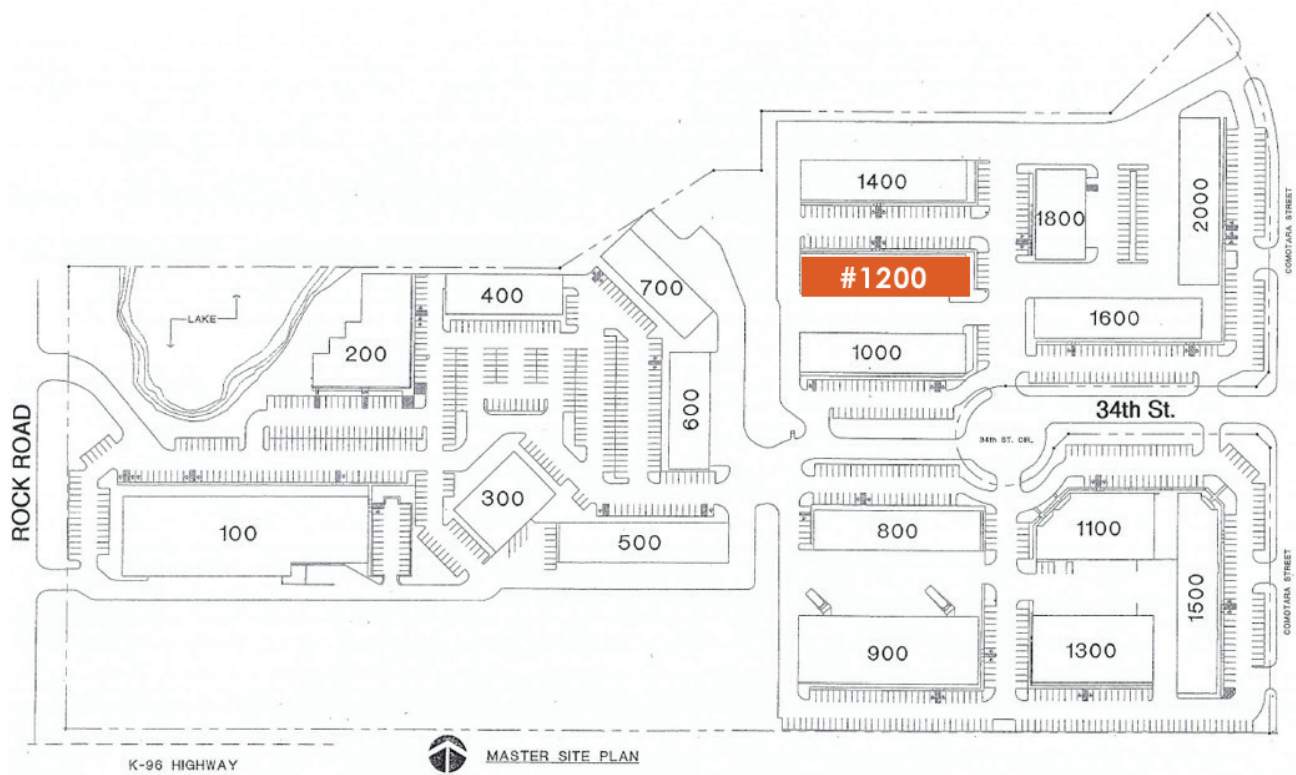


3450 N. Rock Road #201  
Wichita, KS 67226  
amcwichita.com

FOR INFORMATION  
Contact Ross Way  
**(316) 681-1711**  
ross@amcwichita.com

**NORTHROCK BUSINESS PARK**  
8200 E 34th St N, Bldg 1200, Suite #1208 Wichita, Kansas  
Office For Lease

**NORTHROCK BUSINESS PARK SITE PLAN**



3450 N. Rock Road #201  
Wichita, KS 67226  
amcwichita.com

FOR INFORMATION  
**Contact Ross Way**  
**(316) 681-1711**  
ross@amcwichita.com